

HAZEMAG MINPRO SB 1310



Alicante, 06.11.2021

HAZEMAG MINPRO SB 1310

Offer number: A-211107-2004-01
Year of construction: 2004
Year of commission: 2005
Brand: HAZEMAG
Model: MINPRO SB 1310
Capacity: 80 – 1000 t/h (Material depending)

Technical details:

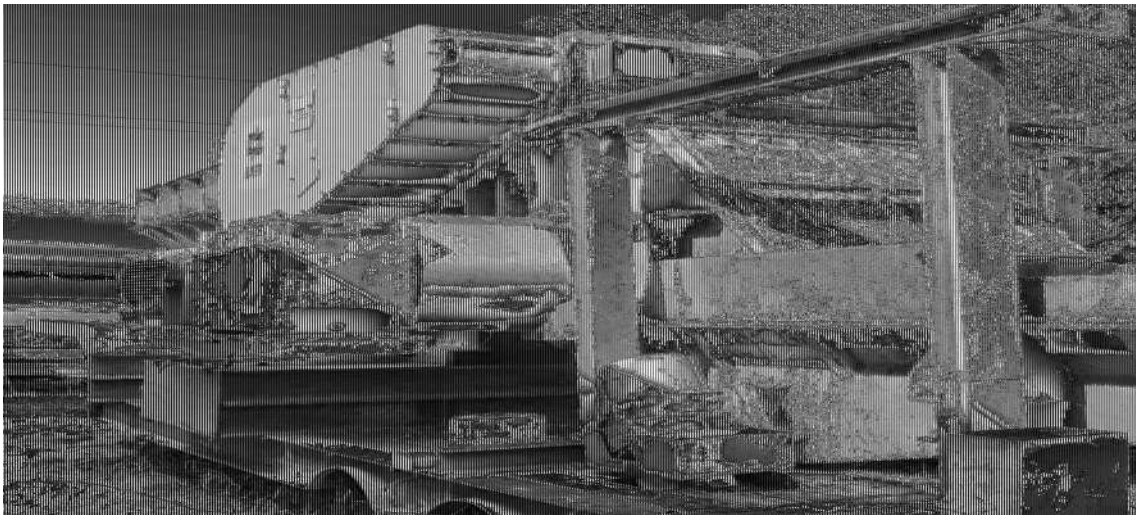
- Horizontal impact roll crusher
- Wheel-mounted chassis 3 axis
- Rotor Diameter 1305 mm
- Rotor Width 990 mm
- Conveyor Width 1000 mm
- Feeding Width 950 mm
- Max. Crusher Inlet opening 1090 x 1300 mm
- Feed Size average 950 x 800 x ? mm
- Product Size 0 – 150 mm
- Capacity
 - Coal 330 – 1000 t/h
 - Recycling 80 – 200 t/h
 - Medium Stone 110 – 550 t/h

Status:

- Dismounted and stored for transport
- Only was working in recycling of railway sleepers

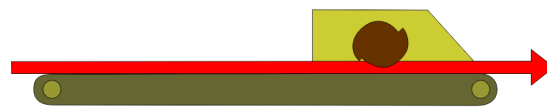
Machines in good conditions!
Sales price on request!

Photos:

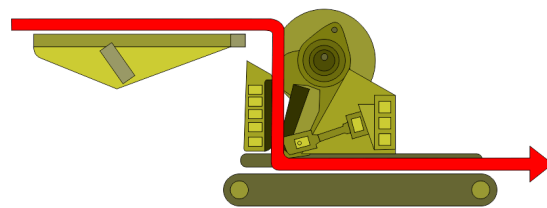




Schematic comparison of Impact roll and Jaw crushers - material flow and wear



Impact roll crusher with horizontal material flow



Jaw crusher with multiple changes of material flow and the corresponding higher wear and tear