



Exposé

MAQUIyTEC
Maquinaria y Tecnologías

HAZEMAG MINPRO SB 1310



Alicante, 06.11.2021

MAQUIyTEC
Spain - Germany - Peru



www.MAQUIyTEC.com



0034 - 666 - 48.88.48



0049 - 39932 - 19560



HAZEMAG MINPRO SB 1310

Offer number: A-211107-2004-01
 Year of construction: 2004
 Year of commission: 2005
 Brand: HAZEMAG
 Model: MINPRO SB 1310
 Capacity: 80 – 1000 t/h (Material depending)

Technical details:

- Horizontal impact roll crusher
- Wheel-mounted chassis 3 axis
- Rotor Diameter 1305 mm
- Rotor Width 990 mm
- Conveyor Width 1000 mm
- Feeding Width 950 mm
- Max. Crusher Inlet opening 1090 x 1300 mm
- Feed Size average 950 x 800 x ? mm
- Product Size 0 – 150 mm
- Capacity

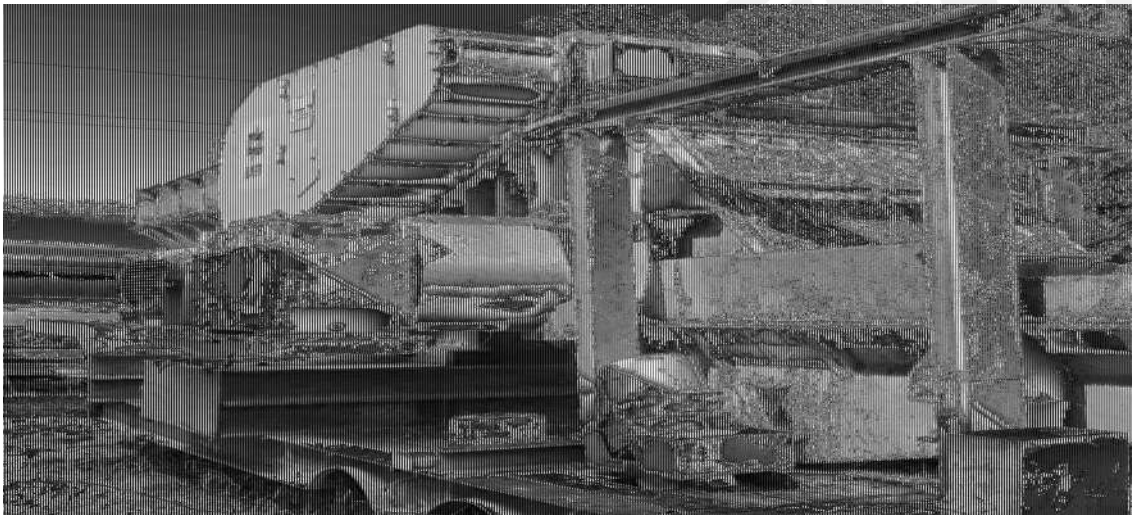
Coal	330 – 1000 t/h
Recycling	80 – 200 t/h
Medium Stone	110 – 550 t/h

Status:

- Dismounted and stored for transport
- Only was working in recycling of railway sleepers

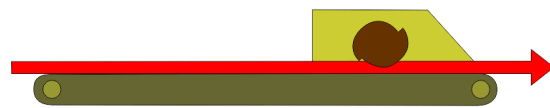
Machines in good conditions!
Sales price on request!

Photos:

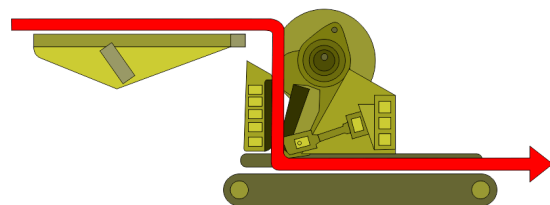




Schematic comparison of Impact roll and Jaw crushers - material flow and wear



Impact roll crusher with horizontal material flow



Jaw crusher with multiple changes of material flow and the corresponding higher wear and tear

To see in higher resolution, visit our web site.

<http://www.maquiytec.com/ph/hazemag-roll-2004.htm>

Impact Roll Crusher General knowledg



MAQUIVTEC
Maquinaria y Tecnologías

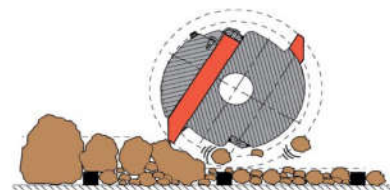
General description

A horizontal impact roll crusher mainly consists of two machine components:

- the impact roll and
- the chain conveyor

This crushing system is proved itself in numerous applications in coal and ore mining above and underground, in the natural stone industry and in the recycling of concrete and rubble.

Reduced wear costs due to re-adjustable impact elements



Intern functionality Impact Roller Crusher

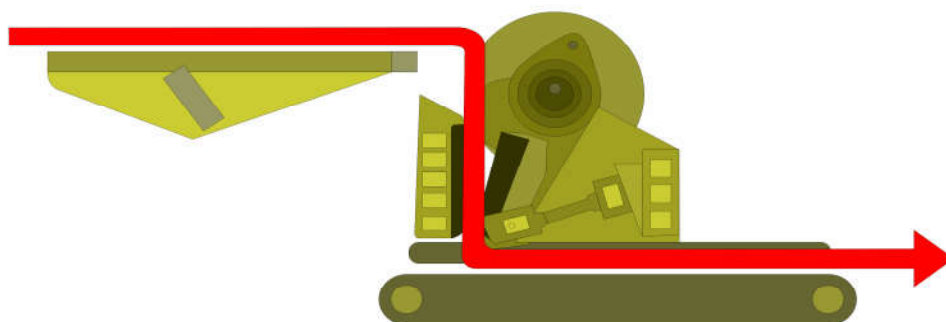


Example: Track-mounted Impact Roll Crusher

Schematic comparison of Impact roll and Jaw chrushers - material flow and wear



Impact roll crusher with horizontal material flow



Jaw crusher with multiple changes of material flow and the corresponding higher wear and tear